

# How to configure Email Gateway

Version 1.1

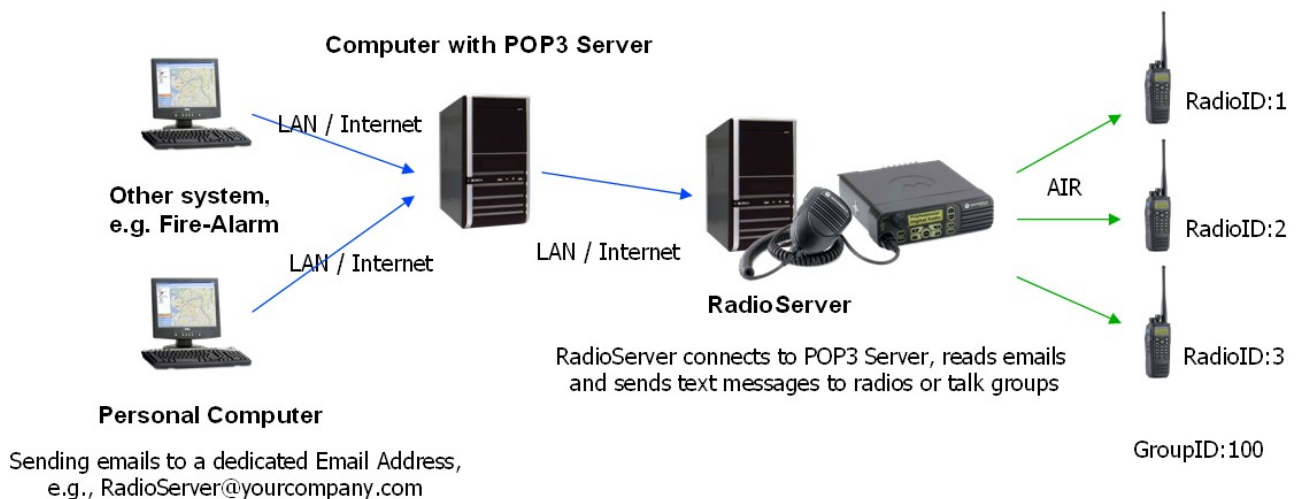
TRBOnet allows you to:

1. Send Text Messages from LAN to a particular radio or talk group (POP3 Server)
2. Forward all Text Messages from radios to base radio to particular email address (SMTP Server)

Note: Microsoft Exchange Server can be used as SMTP and POP3 servers

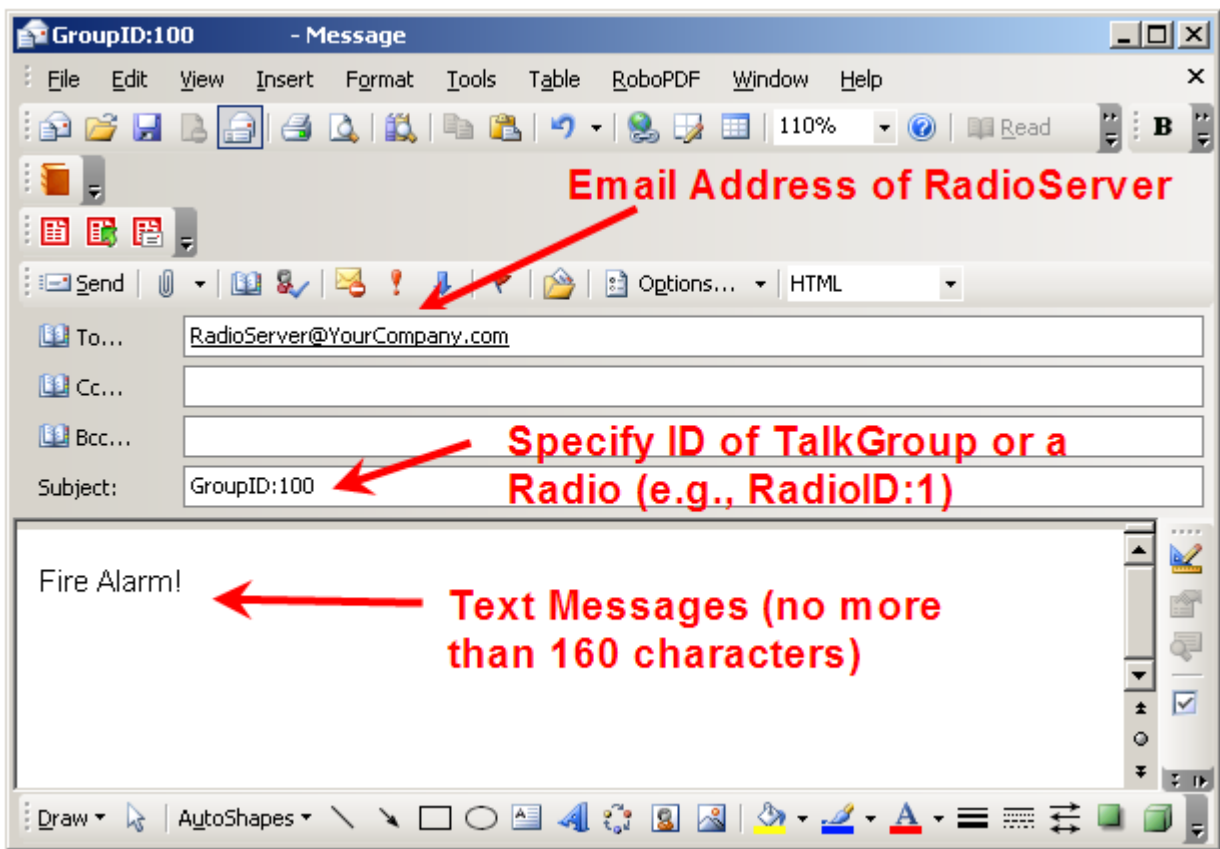
For more information about SMTP or POP3 servers ask your System Administrator.

## 1. POP3 Server Configuration



1.1 Create an email account on your email server. For example [RadioServer@YourCompany.com](mailto:RadioServer@YourCompany.com)

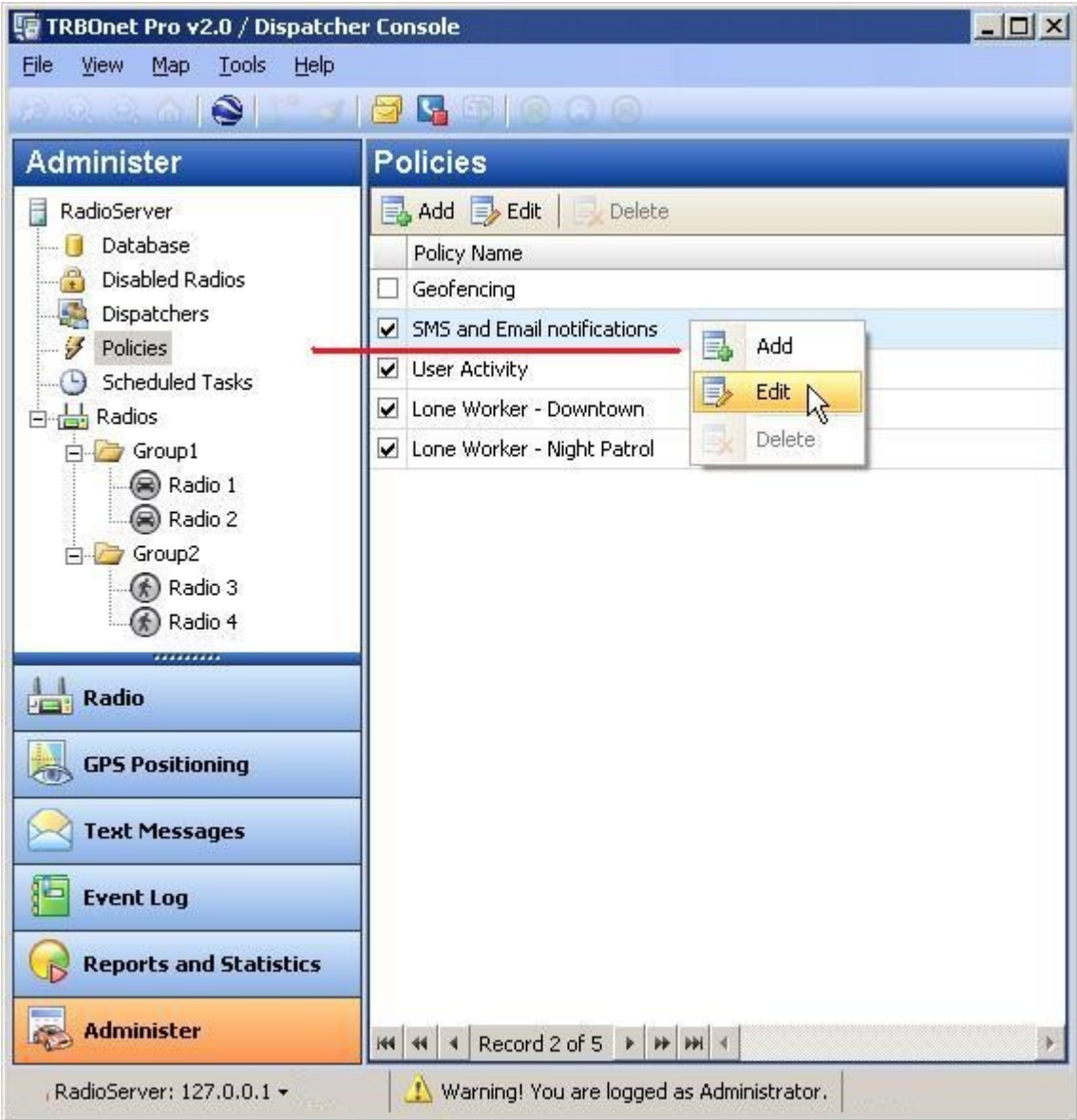
1.2 Send an email to [RadioServer@YourCompany.com](mailto:RadioServer@YourCompany.com). In the “subject” of the letter specify RadioID or GroupID as shown on the picture below.



1.3 Run DispatcherConsole and go to Administer -> Policies -> and specify parameters of POP3 Server. Click the button “Check New Messages”. You will see that email box [RadioServer@YourCompany.com](mailto:RadioServer@YourCompany.com) is not empty. (See pictures below)

1.4 Click OK and run RadioServer. Radios must receive text messages

1.5 If you did not specify the “subject” of email properly or specify not existing RadioID then you will see an appropriate notification in the Event Log of DispatcherConsole.



**Configure Email and SMS notifications** [X]

SMS settings | **Outgoing Email settings (SMTP)** | Incoming Email settings (POP3)

Forward incoming emails to radionetwork (from mailbox to radios)

POP3 server host or IP:

POP3 server port:

Check for new messages every:  seconds

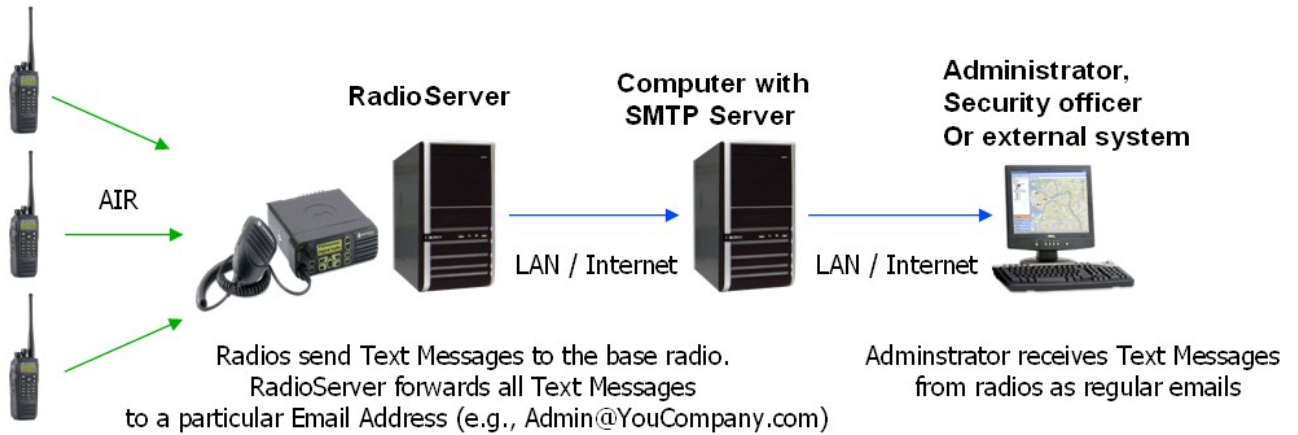
Connect using

- Anonymous access
- Windows authentication
- Use POP3 user name and password

User name:

Password:

## 2. SMTP Server Configuration



2.1 Run RadioServer Configuration and specify parameters of SMTP Server. Click the button “Send Test Message”. Make sure that addressee received the test message successfully. (See picture below)

2.2 Click OK and run RadioServer. Send a text message from a radio to a base radio and make sure the addressee received an email.

**Configure Email and SMS notifications** [X]

SMS settings | **Outgoing Email settings (SMTP)** | Incoming Email settings (POP3)

Send Email to recipients if ALARM has been activated

Forward Text Messages to email recipients

Input messages (from radionetwork to dispatchers)

Output messages (from dispatchers to radionetwork)

Sender: RadioServer@YourCompany.com

Recipients: Admin@YourCompany.com

[Add] [Delete]

SMTP server host or IP: SMTP.YourCompany.com

SMTP server port: 25

Connect using

Anonymous access

Windows authentication

Use SMTP user name and password

User name: [ ]

Password: [ ]

[Send Test Message]

[OK] [Cancel]